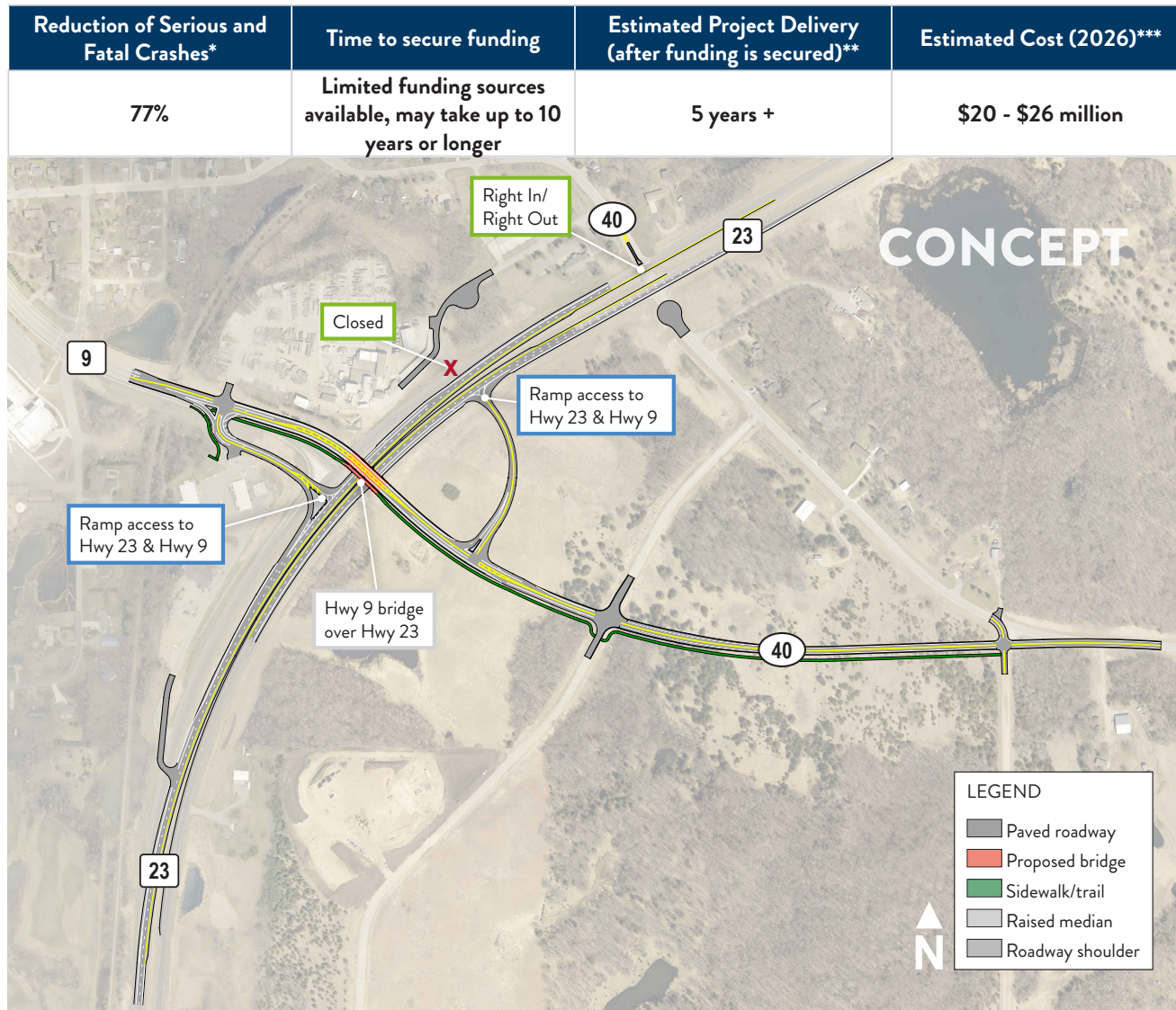


# Draft Concept: Interchange



\*Note - Serious and fatal crash reduction factor obtained from MnDOT's Traffic Safety Evaluation at Reduced Conflict Intersections in Minnesota (August 2021)

\*\*Note - Project development doesn't typically start until a project is funded or in a fiscal constraint program like a Highway Improvement or Transportation Improvement Program (i.e. CHIP or STIP).

\*\*\*Note - A range is provided for cost because construction costs are subject to inflation, market conditions at the time of bidding, supply issues, number of bidders, and other factors that cannot be realized until the time of bidding. Cost estimates are construction costs for all improvements shown on this exhibit, including the CR 40 improvements shown.

**Description:** The intersection of Hwy 23 and Hwy 9 would be redesigned with a bridge over Hwy 23 and ramp access to and from Hwy 23. The east leg of CR 40 will be realigned to connect to Hwy 9 and a cul-de-sac will be constructed on existing CR 40 east of Hwy 23. The west leg of CR 40 will be converted to a right in/right out at Hwy 23. The intersection will operate at highway speeds. A Hwy 9 bridge would include a trail across Hwy 23 for people who walk and bike.